

Product Stewardship Programs in a Changing World

Sarah Medearis, ERM

PRODUCT
Stewardship 2017

www.ProductStewardsConference.org | Tampa, Florida | November 2-4 | #ProductStewards17



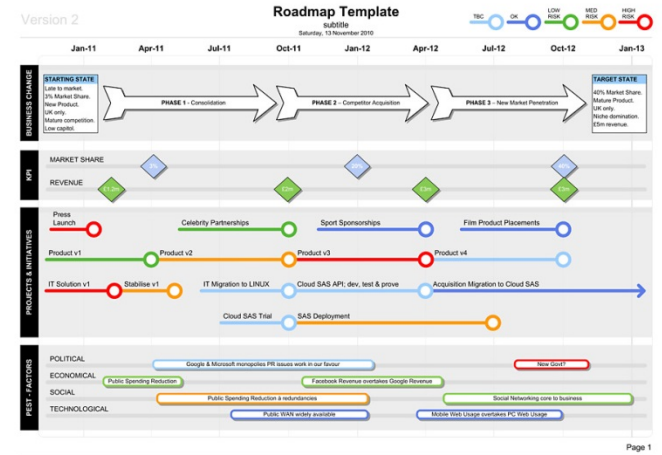
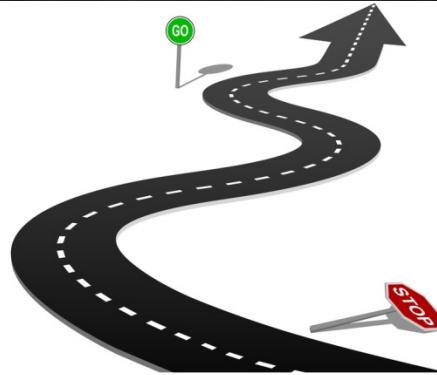
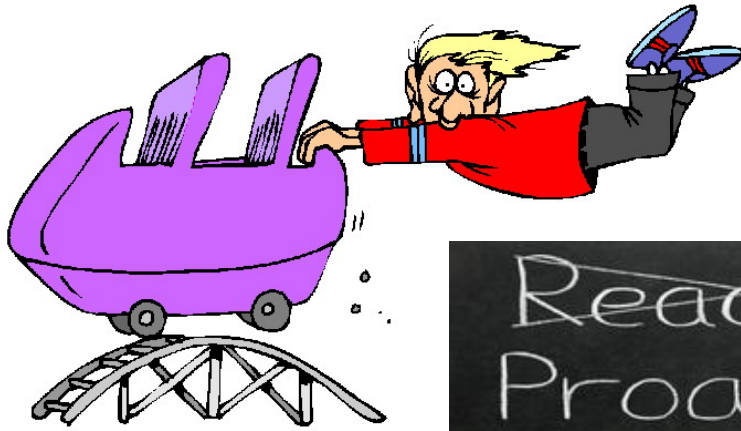
Product Stewardship Society®

Change.....

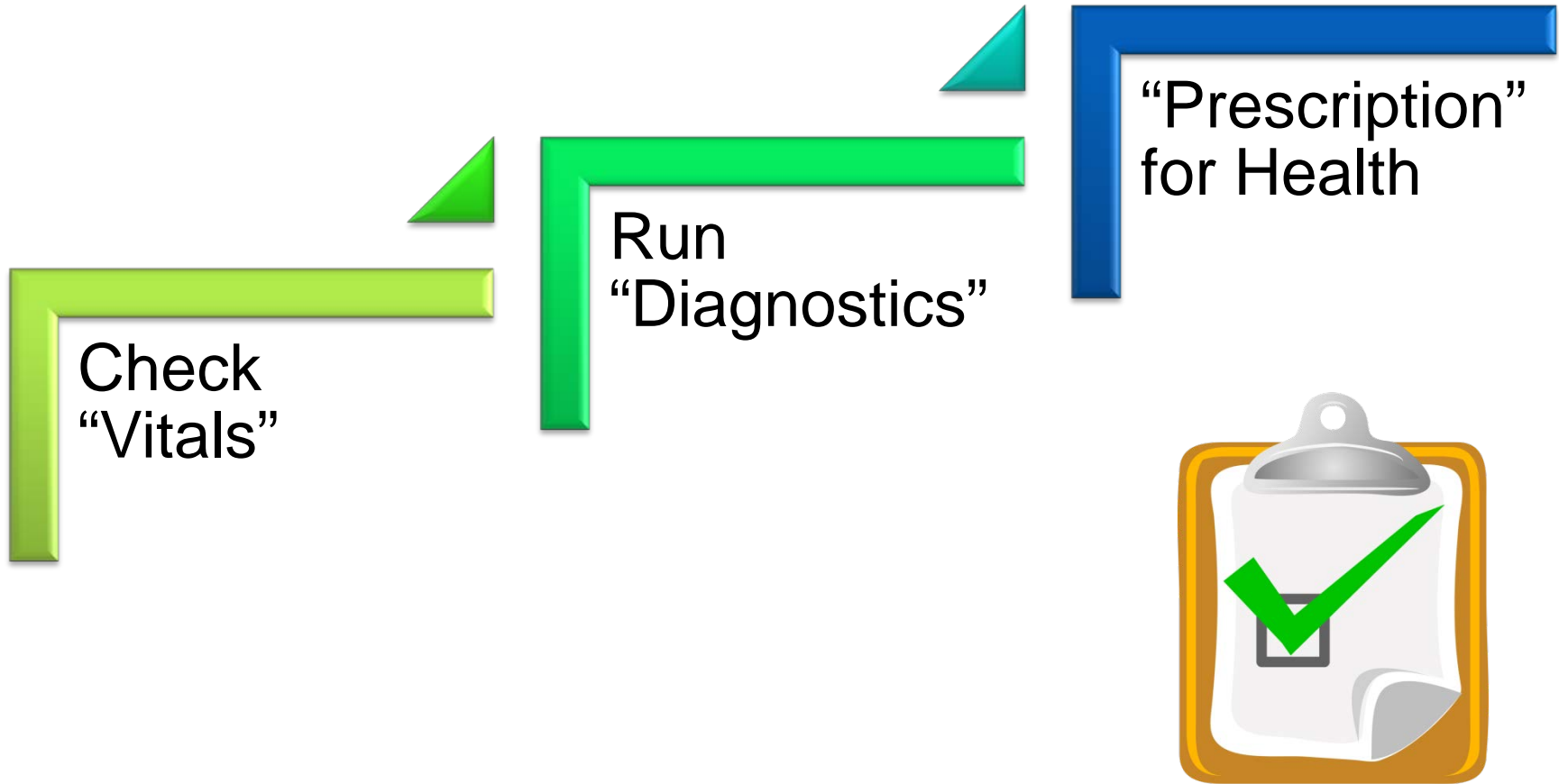


Program Response to Change

Reactive vs. Proactive



Program Health Checks

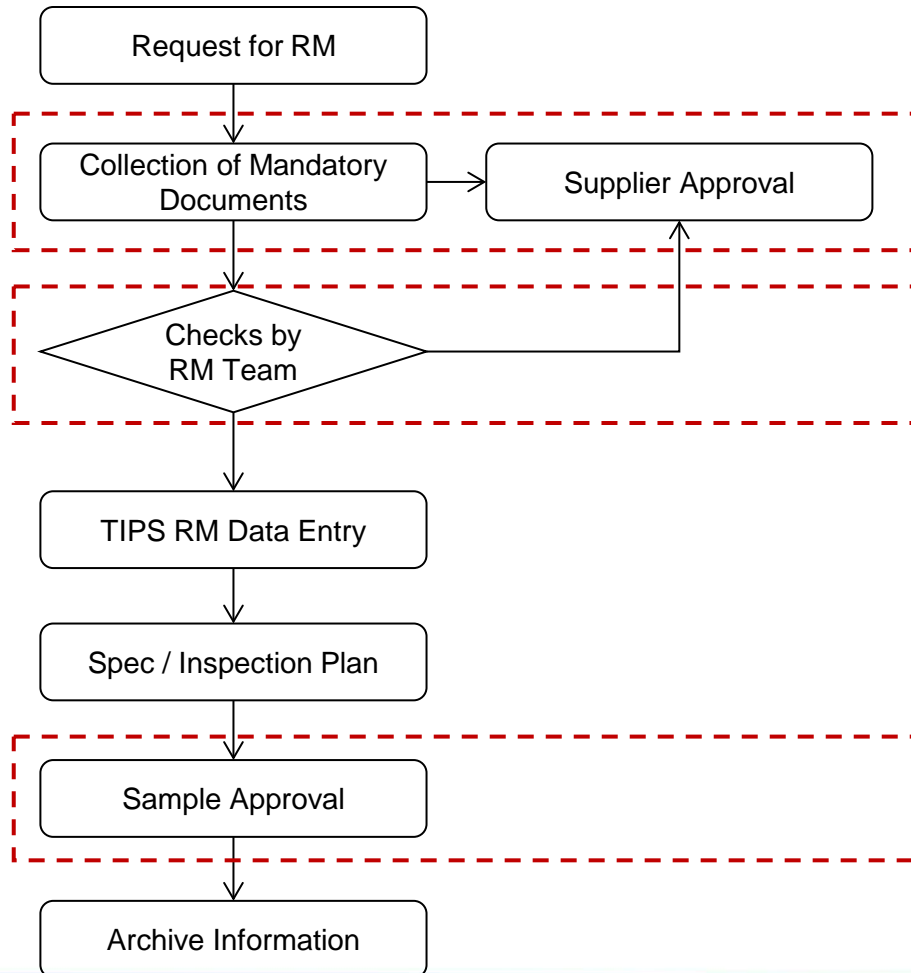


Check “Vitals”

- **Internal Checks:** Conduct Interviews, review policies, procedures, check for clearly defined objectives, metrics, staff competencies along with geographic and product line coverage, from upstream raw materials to downstream customer management
- **External Checks:** Benchmark against industry peers and standards



Run “Diagnostics” on RM Data Mgmt Processes



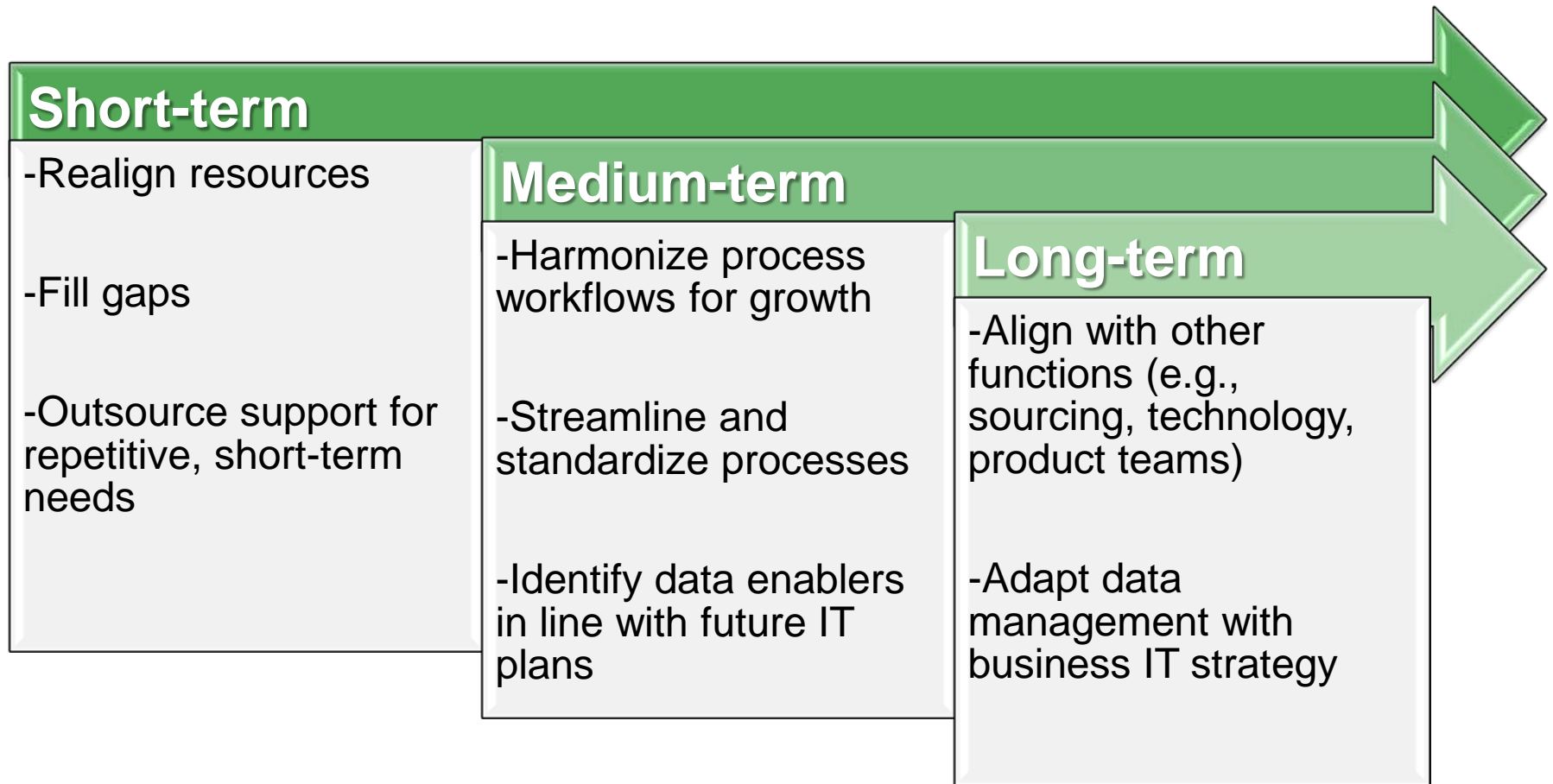
- Sourcing is responsible for this in NA and APAC
- EMEA RM Team performs these actions

- REACh and Crater are EMEA specific activities
- Restricted Material and Inventory done by all

Similar situation for MOC and other PS processes, could they be consolidated?

- Technical / R&D is responsible for this in NA and APAC
- EMEA RM Team owns this process

“Prescription” for Program Health



Program Health Checkpoints



Does it sustainably manage product risks?



Does it deliver opportunities while conforming to industry best practices?



Do the products align with company sustainability goals?



Do products comply with customer and country requirements?

Thank You!

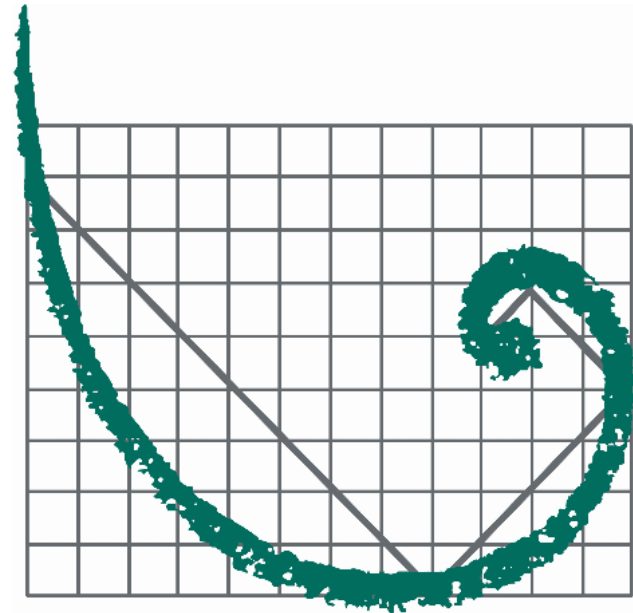
Sarah Medearis

Partner

ERM

+1 (301) 875-9861

Sarah.Medearis@erm.com



ERM

PRODUCT
Stewardship 2017

www.ProductStewardsConference.org | Tampa, Florida | November 2-4 | #ProductStewards17



Product Stewardship Society®