

# IMPACT TO FISHERIES STUDY

## INTRODUCTION

**Purpose of the Study** is to determine whether the proposed project activities, including the presence of a 500m exclusion zone, and the abandonment of the wellhead on the seafloor could have an **impact on the fisheries industry**.

**Study completed by** Dr David Japp and Sarah Wilkinson of Capricorn Marine Environmental

## DEFINITIONS

**EEZ:** Exclusive Economic Zone.

**Exclusion Zone:** the 500m safety zone around the drillship

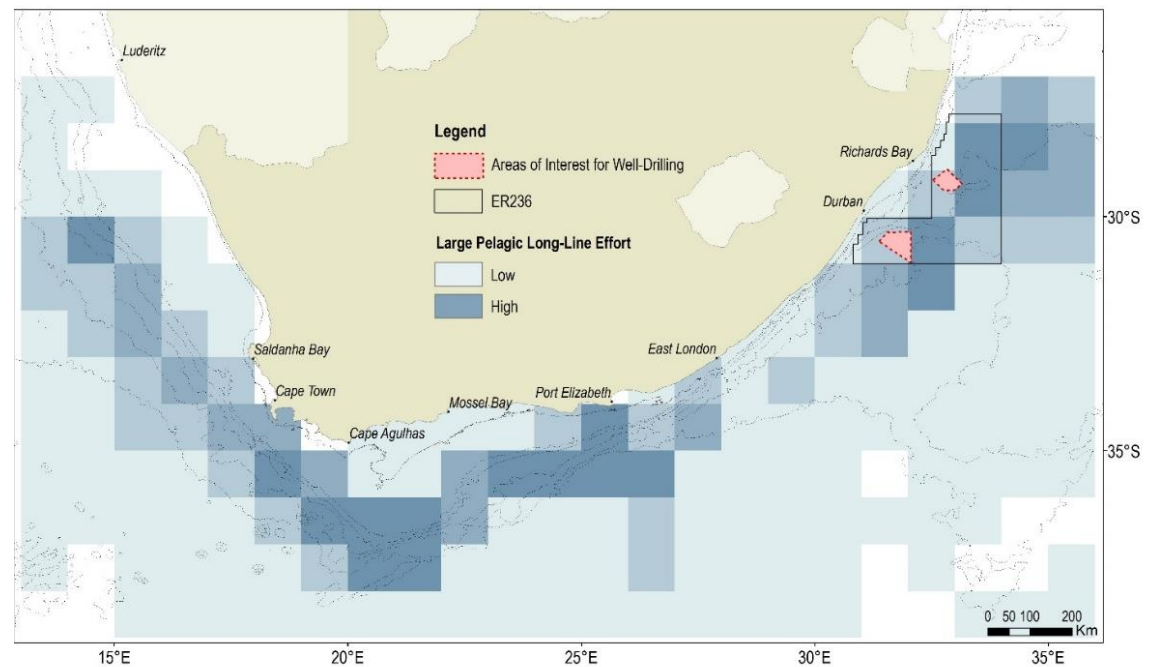
**Demersal fish:** fish that live on or close to the seabed

**Pelagic fish** (e.g. tuna and swordfish) live and feed in the Ocean, in the middle zone of the water column

## KEY FINDINGS

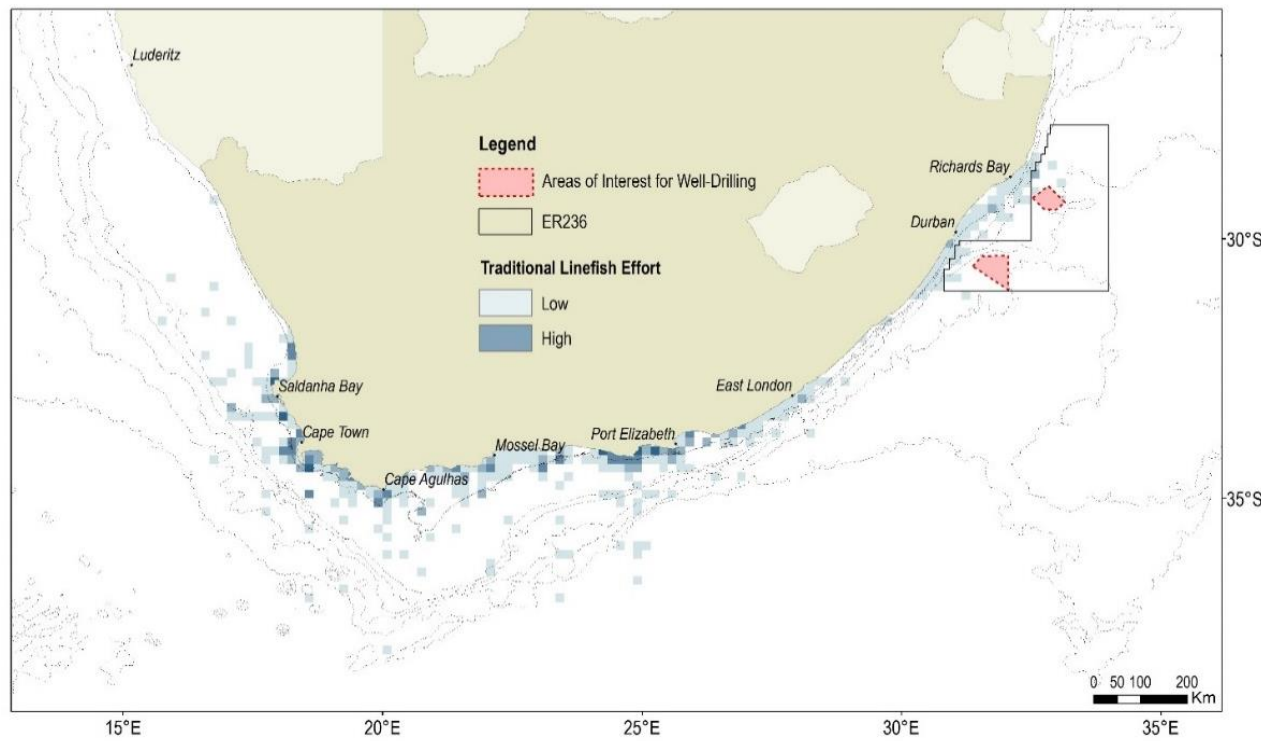
### PELAGIC FISHING:

- The fishery operates extensively within the South African EEZ, primarily along the continental shelf break and further offshore
- There are currently 30 commercial large pelagic fishing rights issued and 21 vessels active in the pelagic fishery
- **Areas with medium effort for Pelagic longline fishery overlap** with the drilling areas of interest
- During drilling operations **no fishing is allowed within the exclusion zone** (500 m radius around drillship)
- The impact was considered to be **local in extent** (limited to the area of interest) and of **short-term duration** (up to two months)
- The **scale of the impact** is determined to be **small**.



Source: Capricorn Marine Environmental (Pty) Ltd, 2018

**SPATIAL DISTRIBUTION OF NATIONAL FISHING EFFORT EXPENDED BY THE LONG-LINE SECTOR TARGETING LARGE PELAGIC SPECIES IN RELATION TO ER236 AND THE DRILLING AREAS OF INTEREST**



Source: Capricorn Marine Environmental (Pty) Ltd, 2018

**SPATIAL DISTRIBUTION OF TRADITIONAL LINE-FISH SECTOR SHOWING THERE IS NO INTERACTION WITH ER236 AND THE DRILLING AREAS OF INTEREST**

### NEARSHORE (COASTAL) FISHING:

- The KwaZulu-Natal (KZN) prawn trawl fishery lies 30-35km inshore of the northern and southern drilling areas of interest, respectively
- The KZN line-fish fishing effort lies at least 10km and 35km inshore of the northern and southern drilling areas of interest, respectively
- The KZN line-fish and prawn trawl fishery partially overlap with the Block but **no areas overlap with drilling area of interest**
- During drilling operations there will be **no impact** to the linefish and crustacean trawl fisheries

## FINDINGS OF IMPACT ASSESSMENT FOR PLANNED ACTIVITIES AND KEY MITIGATION MEASURES

Impact Description	Pre-mitigation Significance	Key Mitigation	Residual Impact
Impacts related to the 500 m exclusion zone around drillship that restricts access to fishing grounds	<b>Minor</b>	Affected stakeholders to be notified of the location, duration and timing of drilling activities	<b>Minor</b>